

# IM08-1B5PS-ZW1

IM Standard

INDUCTIVE PROXIMITY SENSORS

**SICK**  
Sensor Intelligence.

### Ordering information

| Model name     | Part no. |
|----------------|----------|
| IM08-1B5PS-ZW1 | 6020215  |

Other models and accessories → [www.sick.de/IM\\_Standard](http://www.sick.de/IM_Standard)



### Detailed technical data

#### Features

|                                       |                     |
|---------------------------------------|---------------------|
| <b>Housing</b>                        | Cylindricalstandard |
| <b>Thread size</b>                    | M8 x 1              |
| <b>Sensing range <math>S_n</math></b> | 1,5 mm              |
| <b>Installation type</b>              | Flush               |
| <b>Switching frequency</b>            | 3.000 Hz            |
| <b>Connection type</b>                | Cable, 3-wire, 2 m  |
| <b>Output type</b>                    | PNP                 |
| <b>Output function</b>                | NO                  |
| <b>Electrical wiring</b>              | DC 3-wire           |
| <b>Enclosure rating</b>               | IP 67 <sup>1)</sup> |

<sup>1)</sup> According to EN 60529.

#### Mechanics/electronics

|  |                           |
|--|---------------------------|
| <b>Supply voltage</b>                          | 10 V DC ... 30 V DC       |
| <b>Ripple</b>                                  | ≤ 10 %                    |
| <b>Voltage drop</b>                            | ≤ 1,2 V <sup>1)</sup>     |
| <b>Current consumption</b>                     | ≤ 20 mA <sup>2)</sup>     |
| <b>Time delay before availability</b>          | ≤ 100 ms                  |
| <b>Hysteresis</b>                              | 2 % ... 10 %              |
| <b>Repeatability</b>                           | ≤ 2 % <sup>3) 4)</sup>    |
| <b>Temperature drift (of <math>S_r</math>)</b> | ± 10 %                    |
| <b>EMC</b>                                     | According to EN 60947-5-2 |
| <b>Continuous current <math>I_a</math></b>     | ≤ 200 mA                  |
| <b>Cable material</b>                          | PVC                       |
| <b>Conductor size</b>                          | 0,14 mm <sup>2</sup>      |
| <b>Short-circuit protection</b>                | ✓                         |

<sup>1)</sup> At  $I_a$  max.

<sup>2)</sup> Without load.

<sup>3)</sup>  $U_b$  and  $T_a$  constant.

<sup>4)</sup> Of  $S_r$ .

|                                |                                  |
|--------------------------------|----------------------------------|
| Reverse polarity protection    | ✓                                |
| Power-up pulse protection      | ✓                                |
| Shock and vibration resistance | 30 g, 11 ms / 10 ... 55 Hz, 1 mm |
| Ambient operating temperature  | -25 °C ... +70 °C                |
| Housing material               | Metal, Nickel-plated brass       |
| Housing cap material           | Plastic                          |
| Housing length                 | 45 mm                            |
| Thread length                  | 40,2 mm                          |
| Tightening torque, max.        | 4 Nm                             |

1) At  $I_a$  max.

2) Without load.

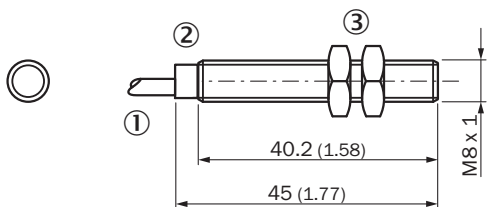
3)  $U_b$  and  $T_a$  constant.

4) Of  $S_r$ .

### Installation note

| Remark | Associated graphic see "Installation" |
|--------|---------------------------------------|
| A      | 3,25 mm                               |
| B      | 8 mm                                  |
| C      | 8 mm                                  |
| D      | 4,5 mm                                |
| E      | 0 mm                                  |
| F      | 12 mm                                 |

### Dimensional drawing (Dimensions in mm (inch))



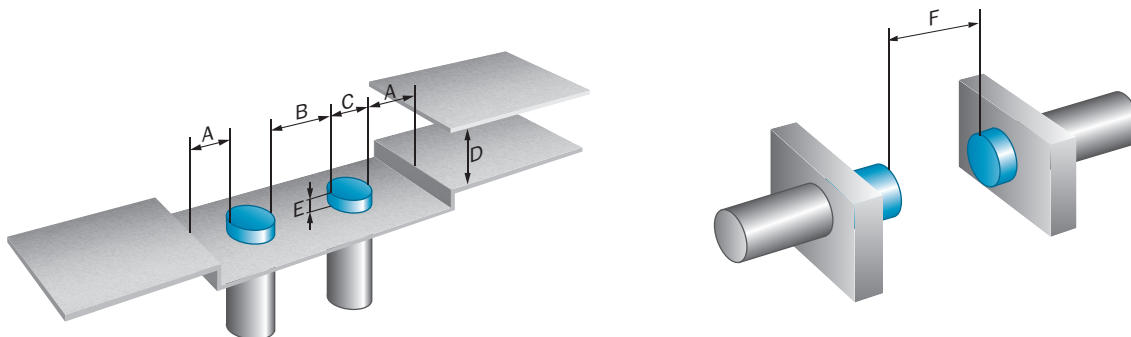
① Connection

② Status LED

③ Fastening nuts (2 x); width across 13, metal

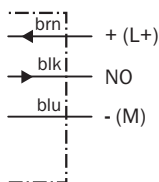
### Installation note

Non-flush installation






### Connection diagram

Cd-001



### Recommended accessories

Other models and accessories → [www.sick.de/IM\\_Standard](http://www.sick.de/IM_Standard)

|   | Brief description   | Model name | Part no. |
|---|---|------------|----------|
| <b>Mounting brackets and mounting plates</b>  |   |            |          |
|  | Mounting plate for M8 sensors, steel, zinc coated, without mounting hardware  | BEF-WG-M08 | 5321722  |
|  | Mounting bracket, M8 thread, steel, zinc coated, without mounting hardware  | BEF-WN-M08 | 5321721  |
| <b>Terminal and alignment brackets</b>  |   |            |          |
|  | Clamping block for round sensors M8, without fixed stop, plastic (PA12), glass-fiber reinforced, mounting hardware included | BEF-KH-M08 | 2051477  |

**Australia**

Phone +61 3 9457 0600  
1800 33 48 02 - tollfree  
E-Mail sales@sick.com.au

**Belgium/Luxembourg**

Phone +32 (0)2 466 55 66  
E-Mail info@sick.be

**Brasil**

Phone +55 11 3215-4900  
E-Mail marketing@sick.com.br

**Canada**

Phone +1 905 771 14 44  
E-Mail information@sick.com

**Česká republika**

Phone +420 2 57 91 18 50  
E-Mail sick@sick.cz

**China**

Phone +86 4000 121 000  
E-Mail info.china@sick.net.cn  
Phone +852-2153 6300  
E-Mail ghk@sick.com.hk

**Danmark**

Phone +45 45 82 64 00  
E-Mail sick@sick.dk

**Deutschland**

Phone +49 211 5301-301  
E-Mail info@sick.de

**España**

Phone +34 93 480 31 00  
E-Mail info@sick.es

**France**

Phone +33 1 64 62 35 00  
E-Mail info@sick.fr

**Great Britain**

Phone +44 (0)1727 831121  
E-Mail info@sick.co.uk

**India**

Phone +91-22-4033 8333  
E-Mail info@sick-india.com

**Israel**

Phone +972-4-6801000  
E-Mail info@sick-sensors.com

**Italia**

Phone +39 02 27 43 41  
E-Mail info@sick.it

**Japan**

Phone +81 (0)3 5309 2112  
E-Mail support@sick.jp

**Magyarország**

Phone +36 1 371 2680  
E-Mail office@sick.hu

**Nederland**

Phone +31 (0)30 229 25 44  
E-Mail info@sick.nl

**Norge**

Phone +47 67 81 50 00  
E-Mail sick@sick.no

**Österreich**

Phone +43 (0)22 36 62 28 8-0  
E-Mail office@sick.at

**Polska**

Phone +48 22 837 40 50  
E-Mail info@sick.pl

**România**

Phone +40 356 171 120  
E-Mail office@sick.ro

**Russia**

Phone +7-495-775-05-30  
E-Mail info@sick.ru

**Schweiz**

Phone +41 41 619 29 39  
E-Mail contact@sick.ch

**Singapore**

Phone +65 6744 3732  
E-Mail sales.gsg@sick.com

**Slovenija**

Phone +386 (0)1-47 69 990  
E-Mail office@sick.si

**South Africa**

Phone +27 11 472 3733  
E-Mail info@sickautomation.co.za

**South Korea**

Phone +82 2 786 6321/4  
E-Mail info@sickkorea.net

**Suomi**

Phone +358-9-25 15 800  
E-Mail sick@sick.fi

**Sverige**

Phone +46 10 110 10 00  
E-Mail info@sick.se

**Taiwan**

Phone +886-2-2375-6288  
E-Mail sales@sick.com.tw

**Türkiye**

Phone +90 (216) 528 50 00  
E-Mail info@sick.com.tr

**United Arab Emirates**

Phone +971 (0) 4 8865 878  
E-Mail info@sick.ae

**USA/México**

Phone +1(952) 941-6780  
1 800-325-7425 - tollfree  
E-Mail info@sickusa.com

More representatives and agencies  
at [www.sick.com](http://www.sick.com)